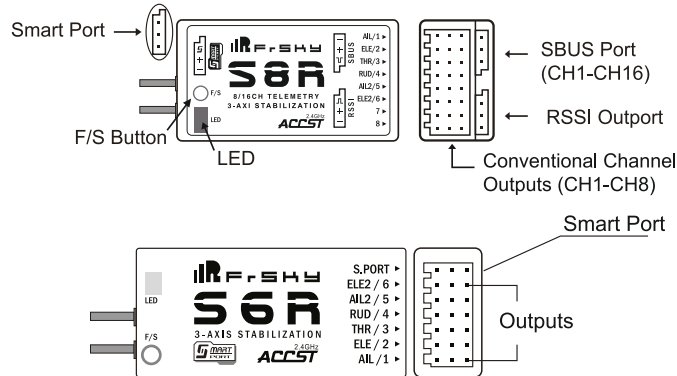


## Overview



## Working State

Green LED	Red LED	Status	Yellow LED	Status	Blue LED	Status
ON	Flashing	Binding	ON	Accelerometer outside of Calibration limits[0.9 G , 1.1 G]	ON	Self-check in progress
Flashing	OFF	Normal	OFF	Accelerometer within Calibration limits [0.9 G , 1.1 G]	OFF	Completed self-check
OFF	Flashing	Signal lost	Flashing	Completed accelerometer calibration		

## Specifications

- Model name: S6R (6CH receiver with built-in 3-axis gyro and 3-axis acceleration)  
47.42×23.84×14.7mmmm (L × W × H)
- S8R (8CH/16CH receiver with built-in 3-axis gyro and 3-axis acceleration)  
46.47×26.78×14.12mmmm (L × W × H)
- Weight: S6R 12.1g ; S8R 14g
- Number of Channels: S6R 6CH (1~6CH from conventional channel outputs)  
S8R 16CH (1~8ch from conventional channel outputs, 1~16ch from SBUS port)
- Operating Current: S6R 100mA@5V ; S8R 120mA@5V
- With RSSI PWM output on board (S8R only): PWM voltage output(0~3.3V), 100HZ, 1500±500us
- Operating Voltage Range: 4.0~10V
- Operating Range: full range
- Gyroscope Measurement Range: ±2000dps
- Accelerometer Measurement Range: ±4g
- Firmware Upgradeable
- Compatibility: ACCST D16

## Features

- Built-in three-axis gyroscope and three-axis accelerometer sensor module
- Built-in RSSI PWM output (0~3.3V) (S8R only)
- Built-in battery voltage detection.
- Smart Port enabled

## Channels

Number of channel	Corresponding parts on the model	Full name	Number of channel	Corresponding parts on the model	Full name
CH1	AIL 1	Aileron	CH7	User-defined	
CH2	ELE 1	Elevator	CH8	User-defined	
CH3	THR	Throttle	CH9	No mark	Gyro gain adjustment
CH4	RUD	Rudder	CH10&CH11	No mark	Flight modes
CH5	AIL 2	Aileron	CH12		Self-check activation switch
CH6	ELE 2	Elevator			

Gyro gain adjustment of CH9: When the value of CH9 is in the center, the gain is zero. The gain increases as the value gets bigger. Until the value is ±100%, the gain reaches maximum.

**Note: CH9-CH12 are not marked on the diagram.**  
CH9 Edit — Setting CH9 at Weight 50 and offsetting 50, the assigned pot/slider will work normally.

## Attentions

CH1~CH8 should be connected to the corresponding servos.  
S.Port could be used to update, edit parameter settings via FrSky STK PC tool and connect with telemetry sensors.

## Binding Procedure

Binding is the process of uniquely associating a particular receiver to a transmitter/transmitter module. A transmitter/transmitter module can be bound to multiple receivers (not to be used simultaneously). A receiver can only be bound to one transmitter/transmitter module.

Follow the steps below to finish the binding procedure.

- Put the transmitter/transmitter module into binding mode
  - For Taranis X9D Plus 2019 as an example, turn on the radio, go to the MENU – MODEL SETUP – PAGE 2, choose Internal or External RF, choose the [mode] ACCST D16 and select BIND.
  - For Horus X10 Express as an example, turn on the radio, go to the MDL – INT MODULE or EXT MODULE, choose the [TX RF Protocol] ACCST D16 and select BIND.
  - For transmitter module (XJT as an example), turn on the transmitter while holding the FS button on the module, release the button and the RED LED on XJT module flash.
- Connect the battery to the receiver while holding the F/S button on the receiver. The RED LED on the receiver will flash, indicating the binding process is completed.
- Turn off both the transmitter and the receiver.
- Turn on the transmitter and connect the battery. The GREEN LED on the receiver indicates the receiver is receiving commands from the transmitter. The receiver/transmitter module binding will not have to be repeated, unless one of the two is replaced.

**Note: After binding procedure is completed, recycle the power and check if the receiver is really under control by linked transmitter.**

## Set up your model and receiver step by step

You need complete calibration of Accelerometer about the six positions via the S6R/S8R.Lua/FreeLink APP/FreeLink.exe firstly.

Step1: Connect your servos follow the channel list according to your model.

Step2: Set you radio follow the channel list.

Step3: Choose the Wing Type via the configuration tool (S6R/S8R.Lua/FreeLink APP/FreeLink.exe).

Step4: Choose the AUTO LEVEL mode, check the model servo feedback.

Step5: Choose the manual mode, check servo feedback via transmitter.

## Quick Mode

It supports stabilization mode and manual (six-axis off) mode and configured through CH10. What's more, an urgent mode is added to configure automatic level mode default through CH12. The precise configuration is written below.

Channel	Position	Flight Mode
CH10	SW Down	None
	SW Mid	Stabilization Mode
	SW Up	Automatical Level Mode
CH12	SW Down	Urgent Mode (Automatic Level Mode)

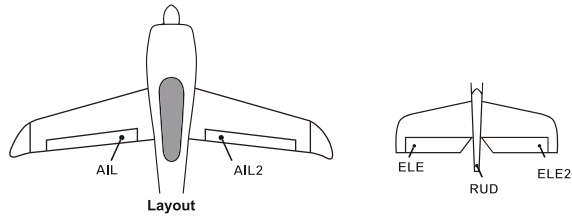
**Note: The default mode of S6R/S8R is Quick Mode. When re-flashing firmware of S6R/S8R or replacing with a new one, the preset mode will be cleared out.**  
- If Quick mode is applied, there is no Knife Edge or (3D) Hover mode.  
- CH11 is not used when using Quick Mode.

## Modes

Conventional Model	Stabilization	Delta Wing	stabilization automatic level
	Automatic level		
	Hover		
	Knife-edge		
		Flying Wing	
		V-tail	

The model types could be enabled via FreeLink.exe or S6R/S8R.Lua. If required, S6R/S8R could be used as a standard 6/8 channel receiver.

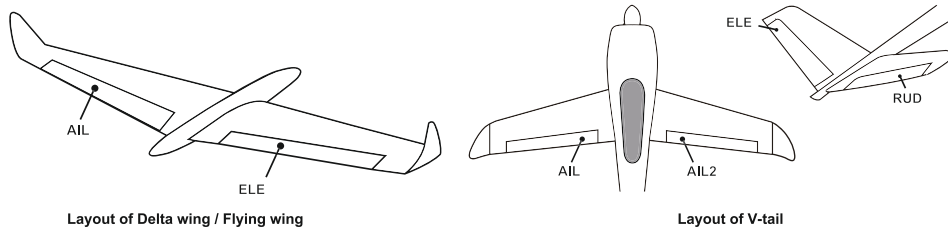
## Conventional model



The available flight modes can be assigned to CH10 and CH11 with three-position switches.

Flight mode	Stabilization	Automatic level	Hover	Knife-Edge	Off
CH10 (3 pos SW)	CH10>M+H (CH10 SW Down)	CH10>M+H (CH10 SW Down)	CH10>M+H (CH10 SW Down)	CH10<M-H (CH10 SW Up)	CH10 SW-mid
CH11 (3 pos SW)	M-H<CH11<M+H (CH11 SW Mid)	CH11>M+H (CH11 SW Down)	CH11<M-H (CH11 SW Up)	M-H<CH11<M+H (CH11 SW Mid)	

## Delta wing & Flying wing & V-tail



The available flight modes can be assigned to CH10 with a three-position switch.

Flight mode	Stabilization	Auto Level	Off
CH10	CH10>M+H (CH10 SW Down)	CH10<M-H (CH10 SW Up)	CH10 SW-mid

When Delta wing/Flying wing/V-tail is selected, the signal produced by the transmitter should be without active mixes on the channels related to AIL and ELE. S6R/S8R will mix the AIL(CH1) and ELE(CH2) input signal with a fixed mix percentage automatically. Signals on CH4-CH8 will behave as required by the user.

**M:** represents a neutral signal period (1500µs)

**H:** represents the time of required signal change to activate the mode (50µs). When the factory settings are selected, the switch position shown above represents the required modes.

### Flight mode:

**Off:** When the mode is activated, S6R/S8R will transmit the received commands produced by the transmitter to the model without compensating.

**Stabilization:** When the model is activated, S6R/S8R will compensate with external forces (wind) as soon as receiving commands from the transmitter. This function is used to enhance the stability of the model on three axes (Pitch, Roll, Roll). CH9 could be used to adjust gyro gain by assigning a knob or a slider, changing the sensitivity of the counteracting signal produced by the internal three-axis gyroscope.

**Automatic level:** When the mode is activated, S6R/S8R will make the model return to level orientation with internal three-axis accelerometer and three-axis gyroscope on AIL and ELE channels after the sticks being released to neutral. RUD channel works in stabilization mode only.

**Hover:** When the mode is activated, S6R/S8R will make the nose of the model straight up with internal three-axis accelerometer and three-axis gyroscope on RUD and ELE channels (ELE and RUD inputs are not required). Under this mode, AIL is used to control the rotation of the model and THR adjust the altitude. AIL channel works in stabilization mode only.

**Knife-edge mode:** When the mode is activated, S6R/S8R will roll the plane on a certain side (wing points up) with internal three-axis accelerometer and three-axis gyroscope on RUD and AIL channels. Thus, AIL inputs are not required. While the mode steering is done with ELE, altitude will be maintained with THR/RUD. ELE channel operates in stabilization mode only.

## Configuration

Methods: APP configuration

FrSky radio configuration

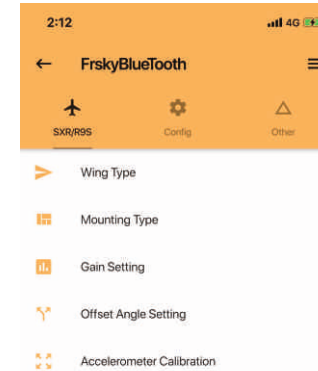
PC configuration software (FrSky STK usb updater)

Configuration parameters: Wing type, mounting type, gain setting, offset angle setting, accelerometer calibration.

### APP (IOS/Android) configuration:

• Connect the S6R/S8R to the App with AirLink S.

The menu screen on the home page is displayed below:



You can download the APP.



IOS FreeLink APP



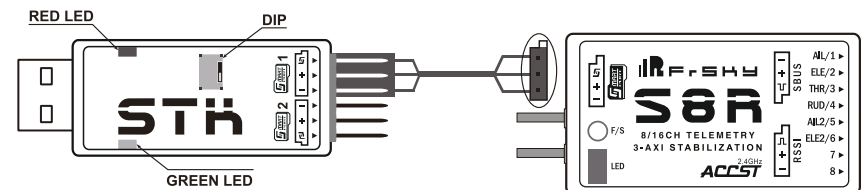
Android FreeLink APP

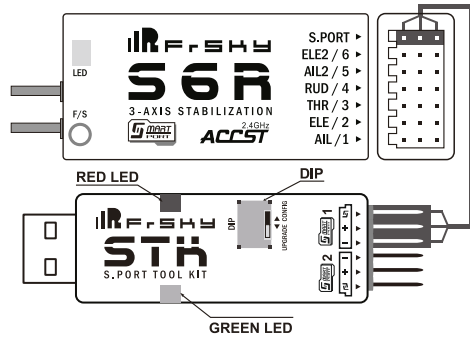
### FrSky radio configuration:

- Copy the S6R/S8R.Lua files on the SD card of the transmitter
- Bind the S6R/S8R to the transmitter and run the files.

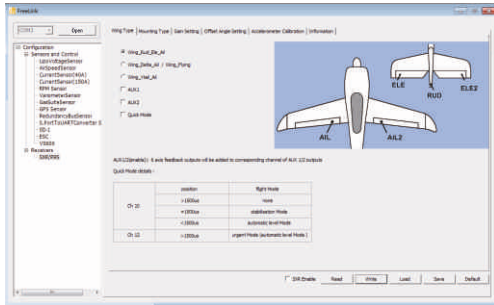
### PC configuration software:

- Connect S6R/S8R as shown below to the FrSky STK usb adapter, and plug it into PC
- Run the S6R/S8R Fremlink.exe and access the home page.
- Press open to connect with S6R/S8R.





The menu screen on the home page is displayed below:

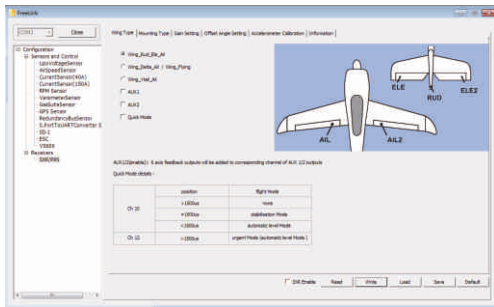


1. Open: Gives the PC software access to S6R/S8R configuration data.
2. Read: Retrieves the stored S6R/S8R data to be edited in the PC software.
3. Write: Stores the setted data on S6R/S8R.
4. Load: restore the settings into the file you saved before.
5. Save: save all settings to one file.
6. Default: Returns all PC software settings to the factory defaults.
7. SXR Enable: Enable/Disable the stabilization function

**Configuration parameters**

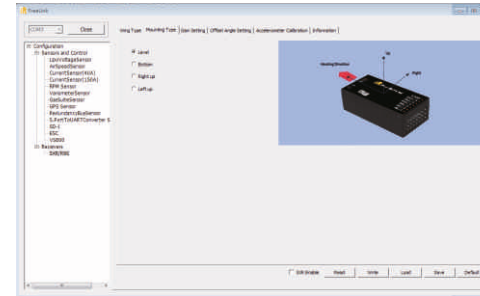
The configuration parameters are listed on the top of the interface: Wing type, Mounting Type, Gain Setting, Offset Angle Setting, Accelerometer Calibration

**Wing Type**



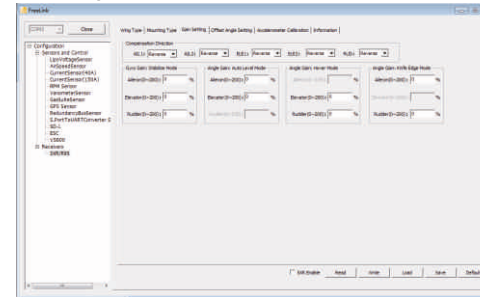
- Options of wing types: Wing\_Rud\_Ele\_Ail—conventional model
- Wing\_Delta\_Ail/Wing\_Flying—Delta/Flying wing
- Wing\_Vtail\_Ail—V-Tail
- AUX1: If selected, AIL2 function will be disabled on CH5
- AUX2: If selected, ELE2 function will be disabled on CH6

**Mounting type**



Level, Bottom, Right and Left up options are available.

**Gain Setting**



**The first part**

Compensation direction: selecting the travel direction of AIL, AIL2, ELE, ELE2 and RUD. "+" means positive and "-" means negative.

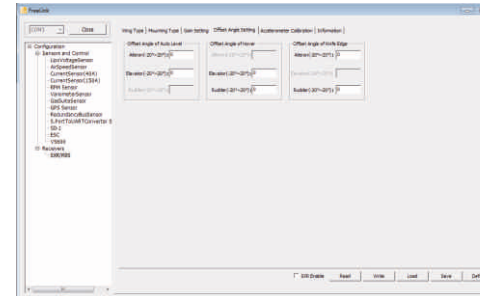
**The second part**

- Gyro gain: Stabilization Mode
- The gain setting under stabilization mode should be set on the channels related to aileron, elevator and rudder.
- Angle Gain: Auto Level Mode
- The gain setting under automatic level mode could be set on the channels related to aileron and elevator.
- Angle Gain: Hover Mode
- The gain setting under hover mode could be set on the channels related to elevator and rudder.
- Angle Gain: Knife Edge Mode
- The gain setting under knife edge mode could be set on the channels related to aileron and rudder.

**Note: Optional range is from 0 to 200%. 0, 1, 2 refers to 0%, 100% and 200% respectively.**

**Offset Angle Setting**

Due to the possible errors in minor installation and calibration, the function is designed to adjust the attitude of the model. Thus, the user could achieve the best orientation when Auto Level, Hover mode and Knife-edge mode is activated.



### Offset Angle of Auto Level

The angle of roll and pitch could be adjusted on the channels related to aileron and elevator. Straight and Level flight could be realized.

### Offset Angle of Hover

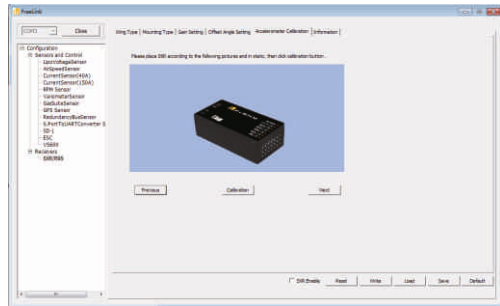
The nose-up angle could be adjusted on the channels related to aileron and elevator. Stationary hover could be realized in calm weather.

### Offset Angle of Knife Edge

The angle of aileron and rudder could be adjusted on the related channels. Straight and level knife-edge flight could be realized.

**Note:** Optional range is from -20° to 20°.

### Accelerometer Calibration



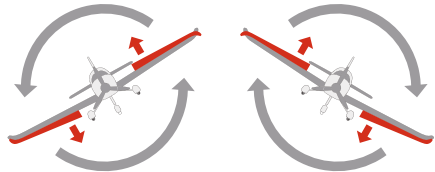
The positive and negative values related to three-axis gyroscope and accelerometer make a total of six values that need to be acquired. Please follow the on-screen instructions.

- Click the "Calibration" button and wait until the YELLOW LED flashing, indicating the calibration on this orientation has been completed.
- Repeat the above step five times (remaining 5 dimensions). Placing S6R/S8R in the required orientation, ensure all values (X, Y, Z, Mod) are displaying 1.000 with the deviation of  $\pm 0.1$ .
- Press "Write" to save the data on S6R/S8R when done.

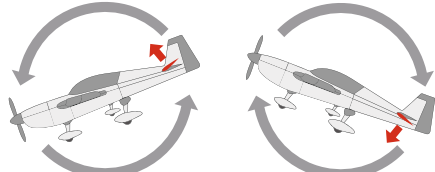
### Inspection of flight attitude

To ensure flight safety, checking the compensation direction of the model is strongly recommended.

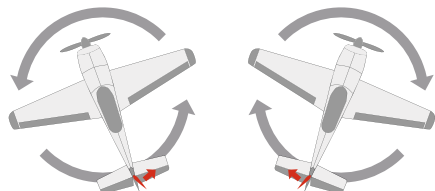
Activating auto level mode will produce a strong deflection on AIL and ELE, which is used to check the response of aileron and elevator. Also, activating Knife-edge and Hover mode will have the same reaction on the rudder.



When the plane is rotated left or right (Roll), ailerons should have the correcting actions as illustrated above.



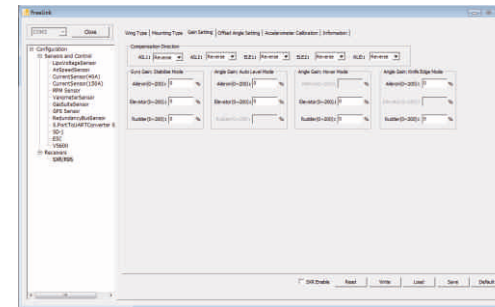
When the plane is rotated up or down (Pitch), elevators should have the correcting actions as illustrated above.



When the plane is rotated to left or right (Yaw), rudders should have the correcting actions as illustrated above.

**⚠ After changing the compensation direction, make sure to check it again on the actual model.**

**Note:** If the compensation direction is incorrect, please reverse the corresponding channel as illustrated below.



### Self-check

#### Attentions

- Before self-check, please place the model on the ground (level surface).
- When the model is flying, aerodynamic balance is more important than level attitude, which results in that the model flies at a constant altitude with the nose slightly pointing up at low speed. To avoid the nose-diving of the model at high air speed, the user must insure that the model is placed at a level or slightly-nose-up attitude during self-check.
- Always install S6R/S8R straight and level in the model. If required, PC software could be used to adjust the angle of attack with the purpose of realizing the required setting. If the values set by the user is bigger than average ones, we advise to recheck the installation orientation of S6R/S8R.

#### Steps

- Turn on the transmitter and ensure that Ail (CH1), ELE (CH2), RUD (CH4), AIL 2(CH5) and ELE (CH6) are in the neutral position.
- Power on the model and start S6R/S8R self-check. Ensure the auto level angle of the gyro and the neutral position of gimbal. Please don't touch/move the model until self-check finishes, or it may corrupt the calibration settings created during the procedure.
- Move the three-position sticks bound to CH12 three times in 3 seconds (up, mid, down). Then the BLUE LED will turn on, indicating self-check procedure is initiated. After that, the corresponding parts on the model will move. At last, the BLUE LED will turn off, indicating self-check has completed.
- Move the sticks bound to CH1-CH6 (except the stick related to Thr) and check the channel output limits, ensuring that the signal outputs of S6R/S8R will not damage the corresponding parts on the model. In the end, S6R/S8R will save the zero points of the gyro, auto level angle, gimbal neutral position and servo channel limits.

**⚠ Never operate the stick bound to CH12 during flight session. If so, it will trigger self-check and may cause the crash of the model.**

#### Setup

- Calibrate S6R/S8R with the PC software and install it into the model. Insure the settings of wing type and mounting type are identical to the intended model installation.
- Turn on the transmitter and reduce the value of servo endpoint setting. Ensure self-check mode will not damage the corresponding parts on the model.
- Assign a knob/slider to CH9, then real-time gain adjustment capabilities of S6R/S8R will be activated.
- Assign three-position switches to CH10 and CH11 with the purpose of switching available flight modes.
- Power on the model and check the deflection direction of each related parts on the model. Make sure the switch assigned to flight modes is correct and the compensation direction of the gyro is set as intended on AIL, RUD and ELE.
- Make a self-check for S6R/S8R if necessary. Disconnecting the power on S6R/S8R will not lose the set parameters.

**⚠ Under identical operating conditions, the value of each channel produced by the assigned switch in FrOS are opposite to that in OpenTX. For example, SW Up in FrOS is equal to SW Down in OpenTX.**

FrSky is continuously adding features and improvements to our products. To get the most from your product, please check the download section of the FrSky website [www.frsky-rc.com](http://www.frsky-rc.com) for the latest update firmware and manuals